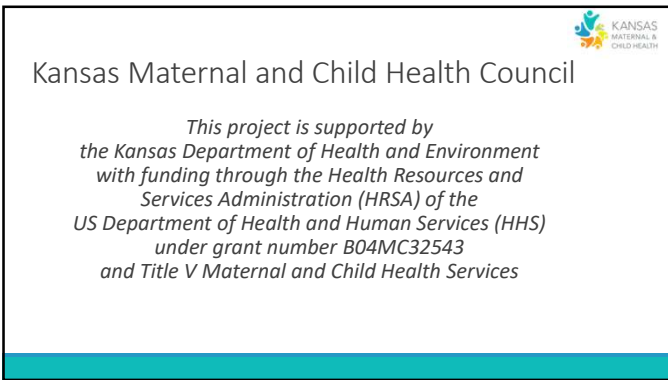




1



2



3

Matt Lara
 Zach Vincent
 Cristi Smith
 Abby Richwine

Kari Harris, MD
 Executive Committee Chair

Welcome Members

4

Matt Lara
 Chief of Staff | Rural Health Transformation Program Director

Zach Vincent
 Cristi Smith
 Abby Richwine
 Kari Harris

Rural Health Transformation Grant

5

KANSAS
 RURAL HEALTH TRANSFORMATION


Inside Kansas' Rural Health Transformation Program

Kansas Maternal & Child Health Council

5/13/2026

6

Draft – for preliminary discussion only




Matt Lara
Chief of Staff at Kansas Department of Health and Environment (KDHE)
RHTP Project Director

By the end of this session, participants will be able to:

- 1 Describe the purpose, structure, and core initiatives of the Kansas RHTP
- 2 Explain how RHTP integrates public health, healthcare delivery, and community partnerships to improve rural health outcomes statewide
- 3 Understand how Kansas is positioned to sustain and scale rural health transformation in future years


© 2025 Kansas Department of Health and Environment. All rights reserved. This document is for preliminary discussion only and is not intended to be used for legal or financial purposes. For more information, please contact the RHTP Project Director at [redacted].



7


Draft – for preliminary discussion only

CMS' \$50B Rural Health Transformation Program (RHTP) enables Kansas to accelerate statewide rural reform




What is CMS RHTP?

- \$50 billion federal Rural Health Transformation Program authorized under the Big Beautiful Bill Act of 2025
- Structured as a CMS cooperative agreement with substantial federal oversight
- Requires measurable transformation across prevention, access, workforce, innovation, and technology



How RHTP is structured

- Multi-year performance-driven funding model
- Ongoing CMS engagement (project officer + grants management oversight)
- Annual reassessment tied to progress on initiatives and policy commitments



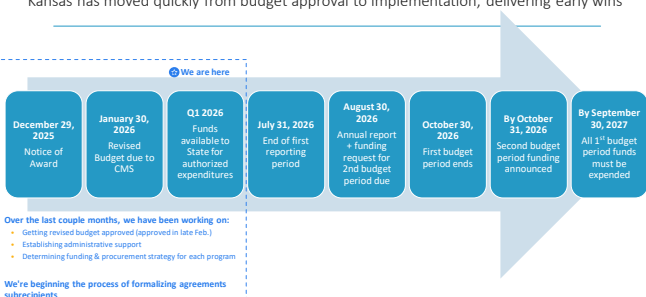
How Kansas is deploying RHTP funding

- Kansas awarded ~222M for Year 1 implementation (6th highest funding)
- Kansas is implementing RHTP through 5 initiatives and 24 programs
- Moving forward with a coordinated approach to achieve statewide rural health impact

8

Draft – for preliminary discussion only

Kansas has moved quickly from budget approval to implementation, delivering early wins



December 29, 2025: Notice of Award

January 30, 2026: Revised Budget due to CMS

Q1 2026: Funds available to State for authorized expenditures

July 31, 2026: End of first reporting period

August 30, 2026: Annual report + funding request for 2nd budget period due

October 30, 2026: First budget period ends

By October 31, 2026: Second budget period funding announced

By September 30, 2027: All 1st budget period funds must be expended

We are here (indicated by a blue circle and arrow pointing to the Q1 2026 milestone)

Over the last couple months, we have been working on:

- Getting revised budget approved (approved in late Feb.)
- Establishing administrative support
- Determining funding & procurement strategy for each program

We're beginning the process of formalizing agreements with providers

9

Draft – for preliminary discussion only

1

Kansas is deploying ~\$222M across 5 strategic initiatives to transform rural health

Initiative 1
 Expand primary and secondary prevention programs

Initiative 2
 Secure local access to primary care

Initiative 3
 Build a sustainable rural health workforce

Initiative 4
 Enable value-based care

Initiative 5
 Harness data and technology

This portfolio reflects Kansas' commitment to protecting rural access today while modernizing care delivery and building a sustainable health system for the future

10

Draft – for preliminary discussion only

1

Kansas designed and is delivering its RHTP initiatives and programs through strong governance and stakeholder collaboration

Initiative	Program	How initiatives were developed
1 Expand Primary and Secondary Prevention Programs	Accountable Food to Medicine + CHW Deployment Program	<ul style="list-style-type: none"> Grounded in CMS RHTP program objectives and federal guidance Built through extensive stakeholder engagement <ul style="list-style-type: none"> 250+ proposals submitted during application development 50+ one-on-one stakeholder and rural provider meetings
	Consumer-Facing Technologies Program	
	Behavioral Health Services Program	
	Integrated Care for Dual Eligible Beneficiaries Program	
	Mobile Cancer Screenings Program	
2 Secure Local Access to Primary Care	Tribal Health Program	<ul style="list-style-type: none"> Structured state-level governance to coordinate implementation across agencies <ul style="list-style-type: none"> Weekly Executive Committee meetings Bi-weekly working sessions Weekly Governor's Office alignment Ongoing stakeholder engagement through monthly KRHA meetings Active CMS partnership ensures compliance and execution <ul style="list-style-type: none"> Dedicated CMS Project Officer and Grants Management Specialist Bi-weekly CMS check-ins and technical guidance
	Regional Partnerships Grant Program	
	Tribal Conversions / Transformative Capital Investment Grant Program	
	Revenue Improvement Program	
	Anchor Hospital Advancement Program	
Mobile Integrated Health Pilot Program		
Rural Primary Care + Public Health Integration Program		
3 Build a Sustainable Rural Health Workforce	Physician Pipeline Program	
	Education and Training Program	
	Recruitment and Retention Program	
	Career Exploration Program	
	Evidence-Based Practice Incentive Program	
4 Enable Value-Based Care	ACD Readiness Program	
	Transportation Program	
	Medicaid Provider Incentive Payment Program	
	Remote Patient Monitoring Program	
	Telhealth Navigator Program	
5 Harness Data and Technology	Data Infrastructure Program	
	Emerging Technology Program	

11

Draft – for preliminary discussion only

2

Initiative 1 | Expand primary and secondary prevention programs

Total Year 1 Funding: ~\$32.5M

Realize meaningful reductions in chronic disease rates and avoidable hospitalizations for complications related to chronic disease in rural Kansas

Programs

- 11 Accountable Food is Medicine + CHW Deployment Program
- 12 Consumer-Facing Technologies Program
- 13 Behavioral Health Services Program
- 14 Integrated Care for Dual Eligible Beneficiaries Program
- 15 Mobile Cancer Screenings Program
- 16 Tribal Health Program

Program spotlight | Accountable Food is Medicine + CHW Deployment

Program funding: ~\$4M

Deploys community health workers across rural Kansas to deliver nutrition-focused interventions and connect individuals to clinical and community-based services, addressing food insecurity and other social drivers of health.

The program integrates food-as-medicine strategies with care delivery to improve chronic disease outcomes and reduce avoidable healthcare utilization.

12

Initiative 2 | Secure local access to primary care


Total Year 1 Funding: ~\$75.3M

Substantially reduce the number of rural Kansas hospitals with negative operating margins

Programs

- 21 Regional Partnerships Grant Program
- 23 REH Conversion / Transformative Capital Investment Grant
- 22 Revenue Improvement Program
- 24 Anchor Hospital Advancement Program
- 25 Mobile Integrated Health Pilot Program
- 26 Rural Primary Care – Public Health Integration Program


Program spotlight | Regional Partnership Grant Program (RPGP)



Program funding: ~\$44M

Provides funding to support collaborative, regionally driven projects among Eligible Providers' and Kansas-based organizations to strengthen access, expand services, and improve care delivery.

The program enables providers to partner across organizations to implement innovative, sustainable solutions tailored to the needs of their communities



13

Initiative 3 | Build a sustainable rural health workforce

Total Year 1 Funding: ~\$18.9M

Improve provider-to-population ratios for primary care, dental, and behavioral health services and ease nursing and allied health shortages in rural Kansas

Programs

- 31 Physician Pipeline Program
- 32 Education and Training Program
- 33 Recruitment and Retention Program
- 34 Career Exploration Program

Program spotlight | Education and Training program



Program funding: ~8M

Expands the rural health and public health workforce pipeline by investing in education, training, and career development programs across Kansas.

- Health Professions Service Educational Award Program
- Health Professions Training Grants Program
- Dental Educational Award Program
- Mobile Simulation Lab



14

Initiative 4 | Enable Value-Based Care


Total Year 1 Funding: ~\$52.2M

Have 100% of Medicare and Medicaid beneficiaries in rural Kansas in accountable care relationships by 2031

Programs

- 41 Evidence-Based Practice Incentive Program
- 42 ACO Readiness Program
- 43 Transportation Program
- 44 Medicaid Provider Incentive Payment Program


Program spotlight | Transportation program



Program funding: ~\$14M

This program enhances rural access to care by aiming to reduce delays in care, improve coordination, and ensure patients are directed to the most appropriate setting.

- Interfacility Transport Teams
- Non-Emergency 911 Calls
- EMS Reimbursement for Treat-In-Place and Transport to Alternative Location
- Behavioral Health Crisis Transport
- Non-Emergency Transportation Grant Program



15

Initiative 5 | Harness Data and Technology

Total Year 1 Funding: ~\$35.8M

Enable rural Kansas providers to meaningfully engage in data sharing and analysis, expanded use of telehealth and remote monitoring, appropriate use of artificial intelligence, and utilization of consumer-facing technologies

Programs

- Remote Patient Monitoring Program
- Telehealth Navigator Program
- Data Infrastructure Program
- Emerging Technology Program

Program spotlight | Emerging Technology Grant Program

Program funding: ~10M

Advances rural health delivery by funding technology investments – including EHR, IT infrastructure, and emerging tools – that enhance care coordination, access, and operational efficiency.

KANSAS

16

Support resources and contact information

- KDHE Website
kdhe.ks.gov/2361/Rural-Health-Transformation-Program
- CMS RHTP Website¹
cms.gov/priorities/rural-health-transformation-rht-program/overview
- Questions
kdhe.RHTP@ks.gov

KANSAS

17

Matt Lara

Zach Vincent
Director of Government Affairs, Education Policy, and OEC Transition Director

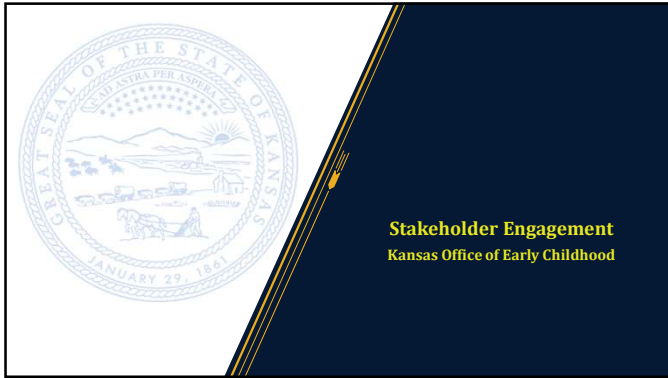
Cristi Smith
Office of Early Childhood Director

Abby Richwine

Kari Harris

Introducing the Kansas Office of Early Childhood

18



19

Vision of HB 2045

- Streamline processes and reduce burdens for families, providers, and communities
- Increase government efficiency and accountability for programming by creating a single authority over programming
- Reduce bureaucracy and red tape required to access various services and programs
- Enhance the mixed delivery system driven by what's best for parents and children

*"Right now in Kansas, there are about four different state offices overseeing various aspects of early childhood care and education. While each of these entities works diligently to provide quality services, having services segregated into silos creates inefficiencies, redundancies, service gaps, and unnecessary confusion for providers and families alike."
—Governor Laura Kelly*

20

KOEK Purpose & Vision

Purpose. KOEC exists to strengthen early childhood systems by improving efficiency, transparency, and safety in state programs, funding, and policy implementation.

Vision. Kansas envisions an early childhood system in which:

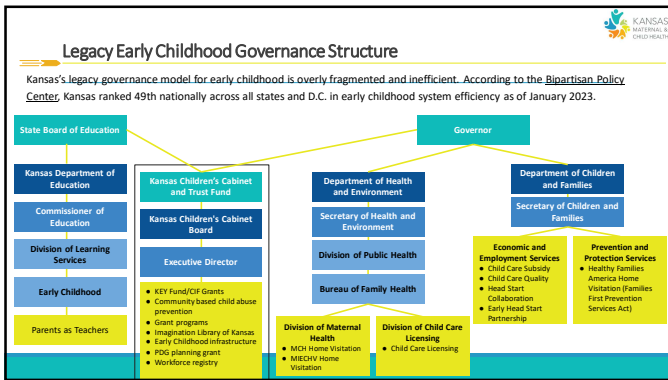
- **Every child** is supported and equipped with the foundations necessary for lifelong success.
- **Families** have access to early childhood programs and services through a coordinated, easy-to-navigate system that reduces fragmentation & administrative burden.
- **Providers** across a mixed-delivery system are supported, well-prepared, and have the resources necessary to deliver high-quality experiences for children.
- **Businesses and communities** are strengthened through a coordinated approach that supports workforce participation and enables families to thrive.

21

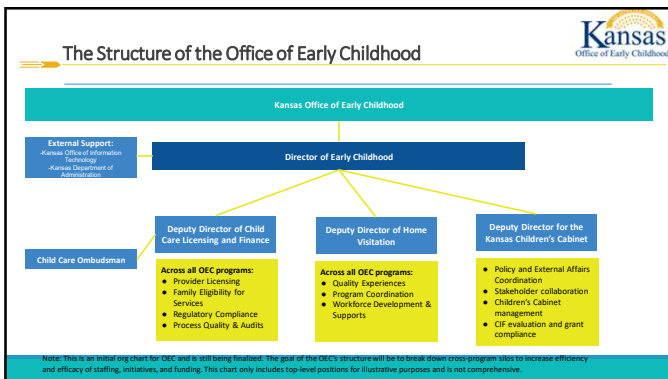
Overview of ECE Programs Transitioning to KOEC

	Programs moving into KOEC:	Programs remaining in their current agency:
Department of Children and Families (DCF)	<ul style="list-style-type: none"> Child Care Subsidy (CCDF), including policy, administration, subsidy, and quality of the program Child Care Quality Head Start Collaboration Office (KHSCO) Kansas Early Head Start Child Care Partnership (KEHS-CCP) Kansas Early Head Start Home Visitation (KEHS-HV) Healthy Families America Home Visiting (HFA) 	<ul style="list-style-type: none"> Child Care Subsidy Parent Enrollment, Eligibility, and Payments
Kansas Department of Health and Environment (KDHE)	<ul style="list-style-type: none"> Child Care Licensing Maternal and Child Health Home Visitation Maternal, Infant, and Early Childhood Home Visitation (MIECHV) 	<ul style="list-style-type: none"> IDEA Part C (Infant & Toddlers Services) Women, Infants, and Children (WIC)
Kansas State Department of Education (KSDE)	<ul style="list-style-type: none"> Parents as Teachers (PAT) 	<ul style="list-style-type: none"> Pre-K Child and Adult Care Food Program (CACFP)
Children's Cabinet and Trust Fund (KCCTF) - All programs moving to KOEC		


22




23



24




Responsibilities of the Office of Early Childhood




- **Implement Early Childhood and Child Care Policies:** Carry out child care and early childhood policies, processes, procedures, and funding decisions under the direction of the Governor, Director, and Legislature, including programs and awards administered through the Children's Cabinet.
- **Administer and Coordinate Early Childhood Programs:** Manage programs serving young children and families, and coordinate services across child care, early learning, home visitation, and related fields to support healthy child development.
- **Provide Support and Problem Resolution:** Provide streamlined supports and guidance to families, providers, communities, and the business sector.
- **Ensure Accessible, User-Friendly Services:** Provide clear, easily accessible information and support to the public and providers, including access to services, regulations, issue resolution, and funding.
- **Serve as Central Point of Contact:** Act as the primary liaison to federal and state agencies on child care and home visiting services, funding, and grants.
- **Maximize Administrative Efficiency:** Streamline processes to reduce burdens on families and providers and improve access to early childhood services.

25



Progress on Key Focus Areas



- **Transfer of People:** Establishing a preliminary organizational chart for effective organization; notifying impacted employees of their transfer to the KOEC; engaging with internal staff impacted by the transition through regular touchpoints.
- **Transfer of Funds:** Reviewing the budgets of all impacted programs and funding streams; developing recommendations for efficient use of funds; establishing formal timelines for transfer of funds and federal approval for program transfers; developing an agency budget from existing resources at legacy agencies.
- **Transfer of Programs:** Building recommendations for reducing duplication and inefficiencies in KOEC's policies, contracts, and systems; addressing inefficiencies and issues of sustainability across programs.
- **Field Management:** Developing and implementing consistent engagement with external stakeholders and those impacted by the transition; establishing plans for multiple feedback loops with those providing services in the field.
- **Executive Management:** Overseeing a comprehensive search process for KOEC's inaugural Director; meeting with and responding to requests from the Legislature, Governor, and others.

26





Interagency Transition Team



- Developing and executing a phased transition plan
- Coordination across state agencies
- Identifying and mitigating operational risks
- Overseeing staff transition planning
- Managing Fiscal and budget-related transition activities
- Coordinating contract transitions
- Supporting alignment of core operational systems
- Ensuring continuity of services
- Provide regular updates to executive leadership

27




Representatives from home visiting programs, parents, advocates, business and regional leaders and early childhood workforce

KOEC Advisory Group

Purpose: provides input on key policy issues.

- Communication plan
- Mission and Tag Line
- Gathering information from the field


28



KOEC Year One Priorities

Priority 1	Develop and begin implementing a plan to make more efficient use of resources by July 1, 2027.
Priority 2:	Develop an operating structure that effectively organizes teams and workstreams.
Priority 3:	Develop and begin implementing a strong programmatic strategic plan to unify field-facing systems and improve service delivery.
Priority 4:	Establish a foundation of trust with the early childhood workforce, families, policymakers, and other key partners through efficient, transparent communication.


29



Matt Lara

Zach Vincent

Cristi Smith




Abby Richwine
Education Coordinator
Oral Health Kansas

Kari Harris

30

Abby Richwine, RDH, BS




Current Role

- Education Coordinator- Oral Health Kansas
 - arichwine@oralhealthkansas.org

Career Highlights

- Worked as a clinical Registered Dental Hygienist for over 10 years
- Adjunct faculty at Concorde Career College



31

Oral Health Kansas




Mission

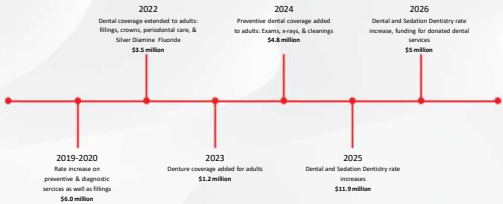
- To improve oral health in Kansas through advocacy, public awareness and education.

Vision

- Kansas is a national leader in oral health education, prevention and treatment.

32

Advocacy



Year	Event / Metric	Value
2019-2020	Rate increase on preventive & diagnostic services as well as fillings	\$6.8 million
2022	Dental coverage extended to adults: fillings, crowns, periodontal care, & Silver Diamine Fluoride	\$1.5 million
2023	Denture coverage added for adults	\$1.2 million
2024	Preventive dental coverage added to adults: Exams, x-rays, & cleanings	\$4.8 million
2025	Dental and Sedation Dentistry rate increase	\$1.9 million
2026	Dental and Sedation Dentistry rate increase, funding for donated dental services	\$2 million

\$32.4 million added to the Kansas Medicaid dental program in seven years


Visit Oral Health Kansas' Medicaid adult benefit webpage to learn more and find fact sheets for consumers and providers
<http://oralhealthkansas.org/MedicaidAdultDentalBenefits.html>

33

Pathways to Oral Health

Committed to:

- Breaking down barriers
- Strengthening support for caregivers and providers
- Creating a more patient-centered oral healthcare system in Kansas.





34

OHK Programs

Child Care Provider Training

How Teething, Weaning, and Oral Habits Impact Oral Health



The Whole Tooth and Nothing but the Tooth



Aug 20, 2026, 12:00 PM Jul 23, 2026, 12:00 PM

35

Resources



36

Resources

The slide features four colorful cards with text and icons, and a QR code. The cards are:

- Durable Denture Guide** (blue): A guide for patients with dentures.
- Overcoming Oral Anxiety** (green): A guide for patients with dental anxiety.
- Dental Anxiety** (yellow): A guide for patients with dental anxiety.
- Smart Brushing for Healthy Smiles** (red): A guide for patients with dental anxiety.

 A QR code is located to the right of the cards.

37

Resources

The slide shows a laptop displaying the Oral Health Kansas website. The website content includes:

- Navigation menu: Home, About Us, Services, Contact Us
- Header: Welcome to Pathways to Oral Health
- Image: A dentist examining a patient's teeth.
- Text: Our work focuses on three key objectives:

Resources for:

- Providers
 - Trainings
 - Provider Guidance (Medicaid)
- Consumers
 - Finding a dentist
 - Confidence in Every Smile video series
 - Advocacy

38

Resources

The slide displays video thumbnails and an infographic. The video thumbnails are:

- 2. Helpful Tips for Better Toothbrush Grip - Series Video 2 (1:08)
- 3. Brushing With Movement Challenges - Series Video 3 (2:19)
- 4. Toothpaste Tools That Work - Series Video 4 (1:48)

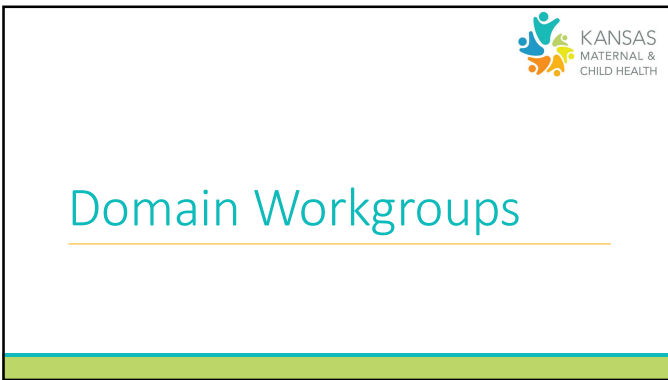
 The infographic is titled "What a Person Resists Toothbrushing" and includes a "Quick Tip" section and a list of reasons for resistance.

Reason	Quick Tip
1. Lack of knowledge	1. Educate on the importance of oral health
2. Lack of motivation	2. Encourage and praise good oral health habits
3. Lack of resources	3. Provide access to oral health services and products
4. Lack of support	4. Engage family and community members
5. Lack of time	5. Encourage efficient oral health practices
6. Lack of interest	6. Make oral health fun and engaging
7. Lack of awareness	7. Increase awareness of oral health issues
8. Lack of information	8. Provide clear and concise information
9. Lack of understanding	9. Explain the benefits of oral health
10. Lack of confidence	10. Encourage and praise good oral health habits

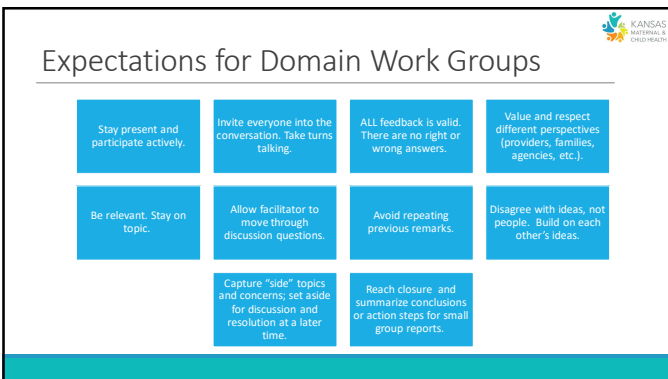
39




40



41



42



Expectations for Domain Work Groups


Actively listen.

Be Part of the Conversation. Speak your mind.

Share the Workload. Volunteer for Action Steps.

Set action steps and team roles in the remaining 5 minutes of the discussion.

43



Work Group Questions

1. What were the most critical takeaways from today's presentations?
2. Summarize your workgroup's progress on your Special Project since the last meeting.
3. Update your action plan with action steps and identify work group members responsible for tasks.

44



Work Group Projects

Women/Maternal: Develop a universal, consistent prenatal risk assessment form that includes clinical and social determinants of health data.

Perinatal/Infant: Welcome postcard for all Kansas babies.

Children: Help parents and caregivers access resources to address their child's behavioral health needs.

Adolescents: Improve civic engagement for adolescents.

45

YOUR FACILITATORS



WOMEN/MATERNAL
Britne Nasser | Women Maternal Health Consultant
KDHE Bureau of Family Health



PERINATAL & INFANT
Jennifer Miller | State Maternal Child & Health Director
KDHE Bureau of Family Health



CHILDREN
Ali Braun | Family Systems Consultant
KDHE Bureau of Family Health




ADOLESCENT
Jason Geslois | Senior Epidemiologist
KDHE Bureau of Family Health

46

WORK GROUP ASSIGNMENTS

Women/Maternal Anton Room Facilitator: Britney Nasser Recorder: Kayla Stangis	Perinatal/Infant Hughes Room Facilitator: Jennifer Miller Recorder: Michelle Black	Children Perkins Room Facilitator: Ali Braun Recorder: Cora Ungerer	Adolescent Marvin A Facilitator: Jason Geslois Recorder: Holly Frye
Ange	Carie	Jennifer	Detallo
Pearl	Deborah	Linda	Lisa
Tisha	Avril	Stephanie	Geno
Mariah	Chans	Amy	Cory
Andra	Kourtney	Vanessa	Dean-Campione
Patricia	Heather	Braun	Eberle
Lisa	Stacy	Clarke	Kirstianna
Frey/Blaine	Drew	Katlin	Afshien
Sapphire	Stephen	Julie	Kari
Shabae	Kelise	Andres	Elaine
Stephanie	Harris	Cherie	Mara
Jamie	Jaggon	Melissa	Sage
Karly	Kim	Heather	Schoenberger
Patricia	Laura	Christi	Schroberger
Oluwakemi	McNamar	Smith	Smith
Lisa	Sara	Peter	Stoepker
Christy	Oryenagubb	Madelaine	Wagner
Kristi	Shoop	Elizabeth	Whitson
Alice	Smith		
Rachele	Zachary		
Kendria	Carli		
	Wray		
	Wynn		
	Tara		
	Wells		

47




KANSAS
MATERNAL &
CHILD HEALTH

Enjoy Your Lunch!

SEE YOU BACK SOON IN BREAKOUTS

48



Welcome Back

TIME FOR REPORT OUTS


49

DOMAIN WORKGROUP REPORT OUT

50

WOMEN/MATERNAL

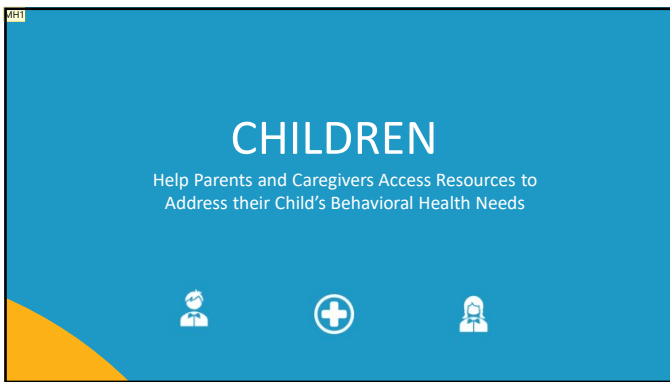
Develop a Universal and Consistent Prenatal Risk Assessment Form that Includes Clinical and Social Determinants of Health Data



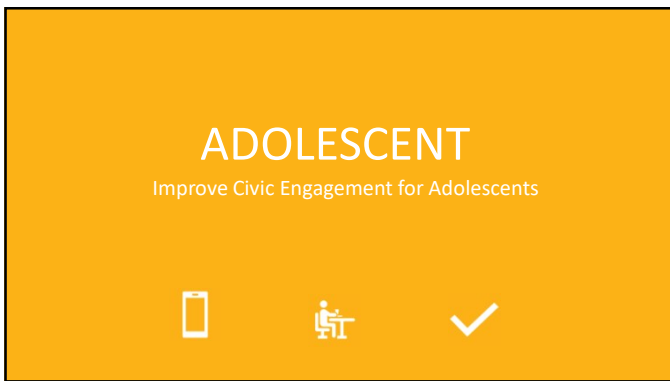
51



52



53



54

Slide 53

MH1 Remove period at end of description just to be consistent with other slides

Michelle Horst, 2026-01-13T18:24:29.851


Member Announcements

THE FLOOR IS YOURS!



55


We Want Your Feedback!



Scan the QR Code for Evaluation

Leave Your Name Tags with Reception

56



Next Meeting Dates

July 15th, 2026
9:00am – 12:00pm
Virtual

September 16th, 2026
10:00am – 2:00pm
Topeka Shawnee Public Library

57

Contact information

Jennifer Miller
State MCH/Title V Director
Jennifer.miller@ks.gov

Karey Padding
KAAP Executive Director
karey.padding@kansasaap.org



58



TO PROTECT AND IMPROVE THE HEALTH AND ENVIRONMENT OF ALL KANSANS

59